

Youth fair begins

Cherryvale Youth Fair begins with increase in exhibitor numbers

PAGE 9



Condemnation priority

Caney city councilors told of city staff's focus on condemning eyesore

PAGE 2



THURSDAY, JULY 10, 2025

14 PAGES

ALWAYS CLEAN AND NEWSY!

\$2.00 PER ISSUE

Summer Celebration guarantees massive fireworks display

COFFEYVILLE — Walter Johnson Park will be filled with star-spangled excitement on Saturday, July 12 for the annual Coffeyville Summer Celebration.

Organizers said more than 110 vendors — including more than one dozen food vendors — will be in the park for a full-day of fun activities, culminating with the region's largest fireworks show at dusk.

Foggy Bottom Boys will ignite the aerial shells and other fireworks. An estimated 65,000 individual fireworks will be ignited for the big show.

Radio station KUSN (98.1 FM) will provide the soundtrack for this year's fireworks show.

Sister stations KGGF will be at Walter Johnson Park at several times during the day-long festivities.

Gail Smith and Mike Bradley, who organize the annual Summer Celebration, said this year's festivities will be

• see CELEBRATION, page 2

HOW PROFESSIONAL WRESTLING WAS INFLUENCED BY CHERRYVALE MEN

Sam, Sandow and the Strangler

BY ANDY TAYLOR
chronicle@taylornews.org

Cherryvale, Kansas, might be an entire galaxy away from the crowded stadiums and indoor arenas that house the theatrics of today's professional wrestling.

But the sport of pro wrestling certainly can pin its origins on the influences of two men who hailed from Cherryvale — and a pioneer wrestler who made Cherryvale a second home.

This week, the Montgomery County Chronicle blows the dust of professional wrestling's archives to find those unique connections.

These are the men you will meet: Billy Sandow, Ed "Strangler" Lewis, and Sam Avey.

Gold Dust Trio

He was born Wilhelm Baumann in 1884 in New York to German immigrants, but Billy Sandow re-emerged in 1915 with a new name while holding true to the two-fisted toughness of his youth.

Like so many immigrant children of his day, Baumann, make that Sandow, had to fight for survival in the rough-and-tumble world of the inner city.

But, his toughness took a backseat when he met his first love, a Cherryvale native named Evelyn "Ethelyn" Busby. They were married in Cherryvale on Christmas Eve 1915.

Newspaper articles indicate that the couple returned to Sandow's hometown of New York until about 1920, when



In the early 1920s, Ed "Strangler" Lewis become the top star in the early days of professional wrestling, where he perfected the headlock maneuver, as seen in photograph, under the guidance of his coach and manager, Billy Sandow, while Sandow resided in Cherryvale.

GETTY IMAGES

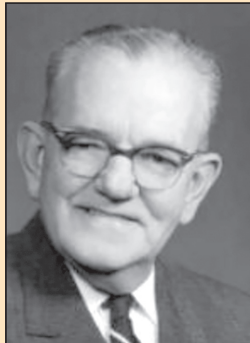
they came back to Cherryvale to enjoy a quieter life in the rural midwest.

But, nothing was quiet about Billy Sandow. Once known in his early wrestling days as the "Great Muldoon," Sandow took wrestling from a sideshow carnival act to high-skilled athletic event.

An accomplished athlete in his own right, Sandow was known for his knowledge of muscle development (he named himself after the famed Prussian

bodybuilder, Eugene Sandow) and an exercise regimen that often included not iron weights but a large rubber strap that offered strength resistance.

Sandow connected with an up-and-coming wrestler from New York named Ed Lewis during World War I, when Sandow was teaching young military recruits how to use hand-to-hand fighting techniques for the war.



Sam Avey



Billy Sandow



Ed "Strangler" Lewis

• see WRESTLING, page 3

Population data shows continued downward trend

Shown below are the populations comparisons of Montgomery County's cities and townships as certified by the Kansas Division of Budget as of July 1, 2025.

	Population 2022 (July 1, 2023*)	Population 2023 (July 1, 2024*)	Population 2024 (July 1, 2025*)	# Growth 2022-2023	# Growth 2023-2024	% Change 2022-2023	% Change 2023-24
Cities:							
Caney	1,759	1,732	1,726	(27)	(6)	(1.5)	(0.3)
Cherryvale	2,157	2,128	2,114	(29)	(14)	(1.3)	(0.7)
Coffeyville	8,690	8,570	8,545	(120)	(25)	(1.4)	(0.3)
Dearing	377	373	372	(4)	(1)	(1.1)	(0.3)
Elk City	257	254	250	(3)	(4)	(1.2)	(1.6)
Havana	82	81	83	(1)	2	(1.2)	2.5
Independence	8,436	8,315	8,287	(121)	(28)	(1.4)	(0.3)
Liberty	99	95	95	(4)	--	(4.0)	--
Tyro	174	172	169	(2)	(3)	(1.1)	(1.7)
Cities total	22,031	21,720	21,641	(311)	(79)	(1.4)	(0.36)
Townships:							
Caney township	938	927	924	(11)	(3)	(1.2)	(0.3)
Cherokee township	404	400	400	(4)	--	(1.0)	--
Cherry township	464	457	458	(7)	1	(1.5)	0.2
Drum Creek township	490	483	480	(7)	(3)	(1.4)	(0.6)
Fawn Creek township	1,372	1,353	1,351	(19)	(2)	(1.4)	(0.1)
Independence township	2,224	2,198	2,181	(26)	(17)	(1.2)	(0.8)
Liberty township	380	374	371	(6)	(3)	(1.6)	(0.8)
Louisburg township	279	275	275	(4)	--	(1.4)	--
Parker township	1,074	1,060	1,061	(14)	1	(1.3)	0.1
Rutland township	263	260	259	(3)	(1)	(1.1)	(0.4)
Sycamore township	806	795	791	(11)	(4)	(1.4)	(0.5)
West Cherry township	271	266	267	(5)	1	(1.8)	0.4
Township Total	8,965	8,848	8,818	(117)	(30)	(1.3)	(0.3)
Montgomery County total	30,996	30,568	30,459	(428)	(109)	(1.4)	(0.4)

* based on population estimates, not actual headcount

Release of annual estimated populations from Kansas Division of Budget shows fewer people in cities, townships

BY ANDY TAYLOR
chronicle@taylornews.org

Population projections for Montgomery County towns and cities are mirroring much of the rest of rural Kansas: down.

Although population figures are largely centered on the 10-year count through the U.S. Census Bureau, state agencies annually set estimated population numbers based on demographic conditions while using the decennial census as a baseline.

Each July 1, the Kansas Division of Budget releases estimated Kansas population data to the Kansas Secretary of State. The population figures are not an actual person-by-person count in towns and cities but estimated population figures that reflect economic and demographic swings.

The estimates help identify population shifts and trends for the state, the region, and the nation, as well as indicating changes to the population of specific groups of individu-

als.

City, county and state leaders use the information in planning their annual budgets and projecting governmental programs that serve their constituents.

For the data that was released on July 1, the total Montgomery County estimated population has dropped by 109 people — from 30,568 in 2024 to 30,459.

And, all cities (for the exception of Havana), also saw declining numbers of around 1 percent.

Those population estimates for the individual cities are:

- Caney: 1,726
- Cherryvale: 2,114
- Coffeyville: 8,545
- Dearing: 372
- Elk City: 250
- Havana: 83
- Independence: 8,287
- Liberty: 95
- Tyro: 169

Havana showed the only growth — by a mere two people. The estimate population of Havana is 83 — up from the estimated 81 in 2024.

In comparing the data from the Kansas Division of Budget with actual census counts from the decennial census dating back to 1900, the latest estimates show Montgomery County's population at being at their lowest in 125 years.

• see POPULATION, page 2



OPINIONS 4-5
SPORTS 12
PUBLIC NOTICES 7

CLASSIFIED ADS 13
OBITUARIES 8
DATEBOOK 7



The percentage of American men who say they would marry the same woman again is 80%. The percentage of men whose wife was present when asked this question: 80%.